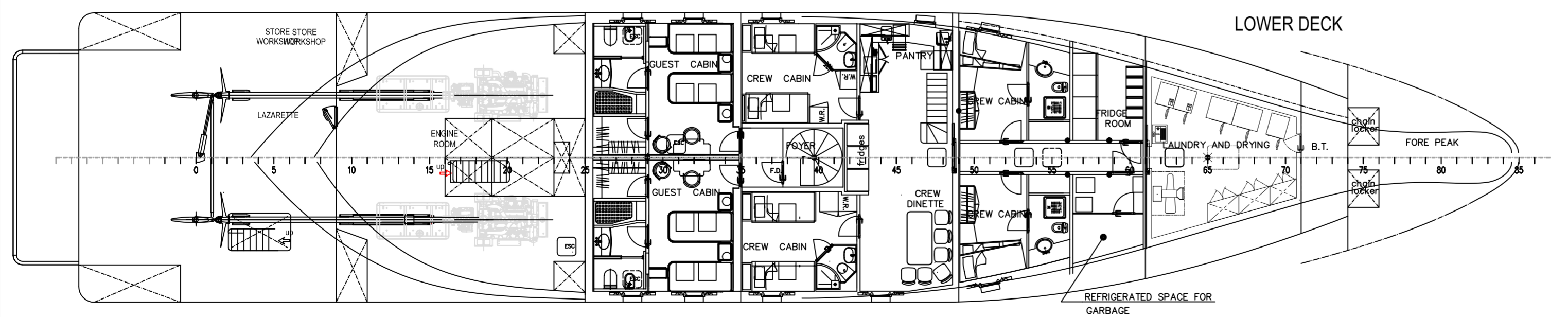


TOTAL PERSONS ON BOARD	: 23
PASSENGERS	: 12
CREW	: 11

Principal Particulars	
Length OverAll	L _{OA} 49.96 m
Length Between Perpendiculars	L _{BP} 40.0 m
Length Loadline (@ 0.85D)	L _{LL} 46.36 m
Breadth Maximum (moulded)	B _{MAX} 10.1 m
Depth (moulded)	D _{ML} 4.55 m



REV	DATE	ISSUE DESCRIPTION
THIS IS A CAD PRODUCED DRAWING REPRODUCTION OR CONSIGNMENT TO A THIRD PARTY IS PROHIBITED		
PROJECT:		
M/Y ASPIRE		STREAMLINED NAVAL ARCHITECTS
DRAWN DATE:	BY:	APPROVED NAME: DATE:
08/11/2018		08/11/2018
DWG TITLE:		architect
GENERAL ARRANGEMENT PLAN		yard
		contractor
DWG No:	SHEETS No.:	SCALE:
G1828 - 001	1	1:125 (A1)
	FROM:	REV:
	1	1